

ARIZONA ARCHIVES MONTH 2022

LOST ARCHITECTURE



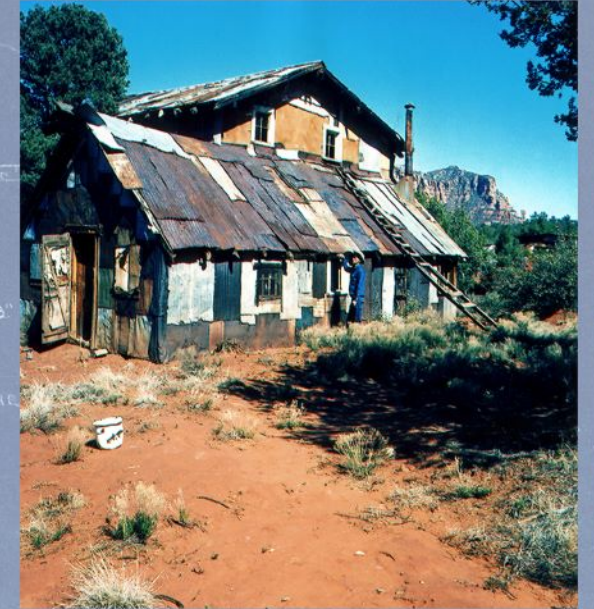
C.R. Michea Florence Cash Store 1897, Florence AZ. After being a downtown Florence landmark for 120 years, this historic building caught on fire on May 24, 2011, and was demolished. Courtesy of Pinal County Historical Museum.



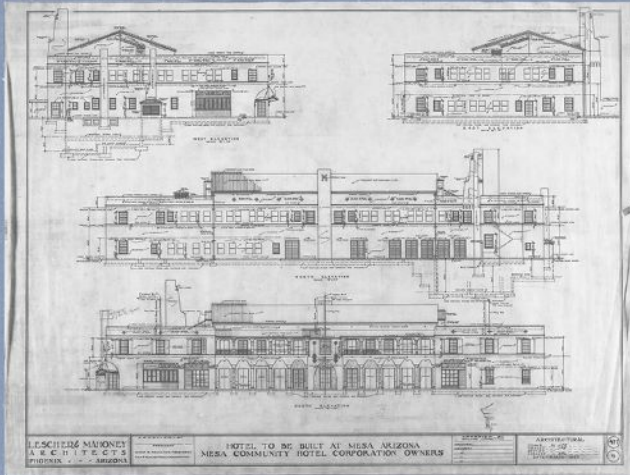
Southern Pacific Railroad Depot, Welton, AZ. Built in the 1920s and operated until 1950 when it was torn down. Courtesy of the Pioneer Museum.



Winsor Castle at Pipe Spring National Monument is a fortified ranch house constructed 1870-1872. This drawing was located in the floorboards of one of the rooms. The "Fish Person" is on a nailer supporting floorboards, and unfortunately is not visible today due to installation of beams in the ceiling of the floor below. Courtesy of Bryce Canyon- Cedar Break- Pipe Spring.



Harry Templeton claimed squatter's rights in the late 1930s to a piece of Forest Service land outside Sedona, where he built this 2-storey home and garage from salvaged materials. The Forest Service took back the land and dismantled his house after he passed away. Image 1996.7.152. Courtesy of the Sedona Historical Society/Sedona Heritage Museum.



The El Portal Hotel Mesa, Arizona, built in 1927 and demolished in 1972. Architects Lescher and Mahoney. Image COMM 427-4 PP-MS Lescher and Mahoney Collection. Courtesy of Arizona Historical Society.



Prescott High School during the 1890s. The building was constructed in 1884 and was used as a territorial legislature meeting place until 1889, when the capitol was moved to Phoenix. However, in 1914 the building was demolished. Image 1408-5014-0001. Courtesy of Sharlot Hall Museum.



This photo is of the Jewish Community Center located on leased area on the Heard Estate. Current location of the Heard Museum. Image JCC 1954. Courtesy of Arizona Jewish Historical Society.



Patriot Square Park was an urban park in downtown Phoenix. It was largely destroyed in 2009 to make way for the new City Scape office and retail project. Image 03-0871. Courtesy of Arizona State Archives.



Photograph of a Hohokam ballcourt (A.D. 750 to 1075) at an archaeological site in South Phoenix. 1940. Image S7:2. Courtesy of Pueblo Grande Museum.



Lawson Merchandise Store and Estill House. Oracle, AZ, 1920. Courtesy of Oracle Historical Society.